

Weekly Art & Craft project - 4

FAMILY TREE PROJECT

Create a family tree to celebrate your family or friends and other people who are important in your life!

For a traditional style family tree (see below) put yourself and siblings (if you have them) at the bottom in a row. Then add your parents above, and your grandparents above them. Lay it out like this then decorate and add colour.

This tree shows you as the middle of 3 children. Obviously change it if this isn't right for you!

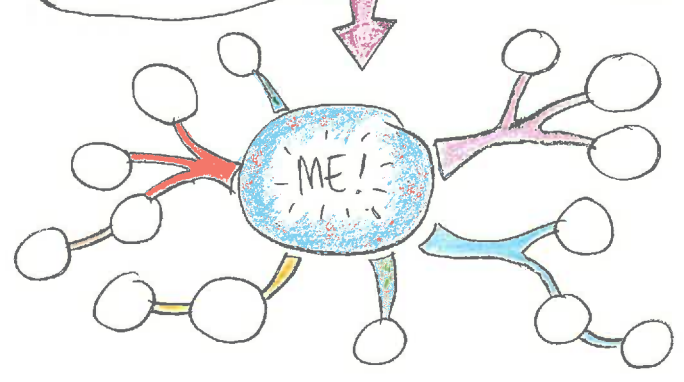


You could draw yourselves and put everyone in a fancy frame.

Add birthdays and wedding anniversaries

less traditional family tree

Or: Make a mind-map tree with yourself in the middle, adding those who are important to you, spreading outwards...



Draw round your hand and arm to make a tree

Write names of family and friends on green cloudy shapes and add...